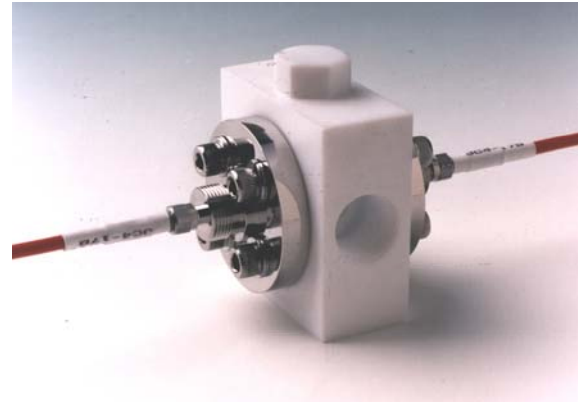


Teflon® Flow Cell

Guided Wave's Teflon® Flow Cell was developed for sample streams that are either extremely corrosive or intolerant to metal contamination. None of the cell's wetted parts are constructed of metal. Only smooth Teflon® and sapphire surfaces contact the process stream. Otherwise, the Teflon® Flow Cell utilizes the same optical components as our popular Multi-Purpose Flow Cell. Corrosion resistant stainless steel is used in the outer cell construction to maintain a rigid, stable optical pathlength. Hence, it has the same high optical efficiency. Plus, it is guaranteed not to leak!



Quality is in the Design

Teflon® not only "cold flows", but has a very large temperature coefficient of expansion. To maintain the all-important pathlength, stainless steel rods are embedded in the Teflon® body. The windows and other precision optics are held rigidly in place by these rods. Thus, preventing even the slightest change to the critical pathlength during the normal expansion and contraction that naturally occurs with Teflon® products. The measurement accuracy of the stream is therefore never compromised due to this or any other phenomena. If necessary, the cell can be completely disassembled for inspection or deep cleaning. The reassemble step is easily accomplished without changing the critical pathlength. For your convenience, the Teflon® Flow Cell is equipped with a clean-out port that provides access to the windows for cleaning without disconnecting fibers or plumbing.

Process-Resistant Construction

Since no metal parts come in contact with the liquid stream, the design is ideal for processes where even parts per billion levels of metals contamination can create serious problems as in semiconductor fab etching and cleaning steps. The cell also performs well in the presence of extremely corrosive streams containing strong acids, bases, peroxides or halogenated compounds.

Common Integration with Most Spectrometers

The Teflon® Flow Cell is manufactured to facilitate full integration with any fiber optic system configured with SMA 905 connectors. Keep in mind that operation with fibers having a core diameter of 400 µm to 600 µm will provide the best optical performance.

Operating Range

The Teflon® Flow Cell operates at moderate temperatures and pressures. Specifically, safe upper limits for deployment are:

- Temperatures to 150 °C
- Pressures to 100 psi

It comes in four standard pathlengths 2, 5, 10 and 20 mm, but other custom paths are available by special order.

Exceptional Light Transmission

Like other Guided Wave optical probes, the Teflon® Flow Cell provides exceptional optical performance. Typical peak transmission exceeds 50%. That means more signal, lower measurement noise and lower detection limits. The flow cell can be completely dismantled, then reassembled without changing the sampling pathlength, an important feature when working with established NIR calibration models.

Compatible with All Guided Wave Analyzers

The sample interface is a crucial component of a complete fiberoptic based analyzer system. For optimal performance, the probe must be "optically matched" with both the spectrophotometer and the fiber optic cable. The Teflon® Flow Cell, just as is the case for all Guided Wave's probes, provides consistently high performance when used in combination with our analyzers and fiber. See the Guided Wave web site (www.guided-wave.com) for information on our process analyzers, fiber and other products.

Specifications

Wetted Materials:	Teflon [®] , Sapphire
Windows:	Sapphire
Non-wetted Metallic Parts:	316 SS
Pathlengths:	2, 5, 10, 20 mm
Maximum Pressure:	100 psi
Spectral Range:	400 – 2100 nm (200 – 1000 nm optional)
Efficiency:	> 45% (800 – 1650 nm)
Maximum continuous operating temperature:	150 °C
Termination:	SMA 905
Pipe Connection:	½" FMPT or ½" Tubulation

Guided Wave has a wide variety of probe designs to meet your process needs, including the SST Probe, O-ring SST Probe, Shuttle Probe, High Safety Flow Cell, Multi-Purpose Flow Cell, Teflon Flow Cell, Extruder Probe, Gas Cell, and laboratory probes. Call us for your custom and special probe needs.



For more information contact gwinfo@guided-wave.com or visit our web site at <http://www.guided-wave.com>

Specifications are subject to change without notice.

©2004 Guided Wave Inc.

Literature Number: 1011-05-09 RevA4

Guided Wave Incorporated

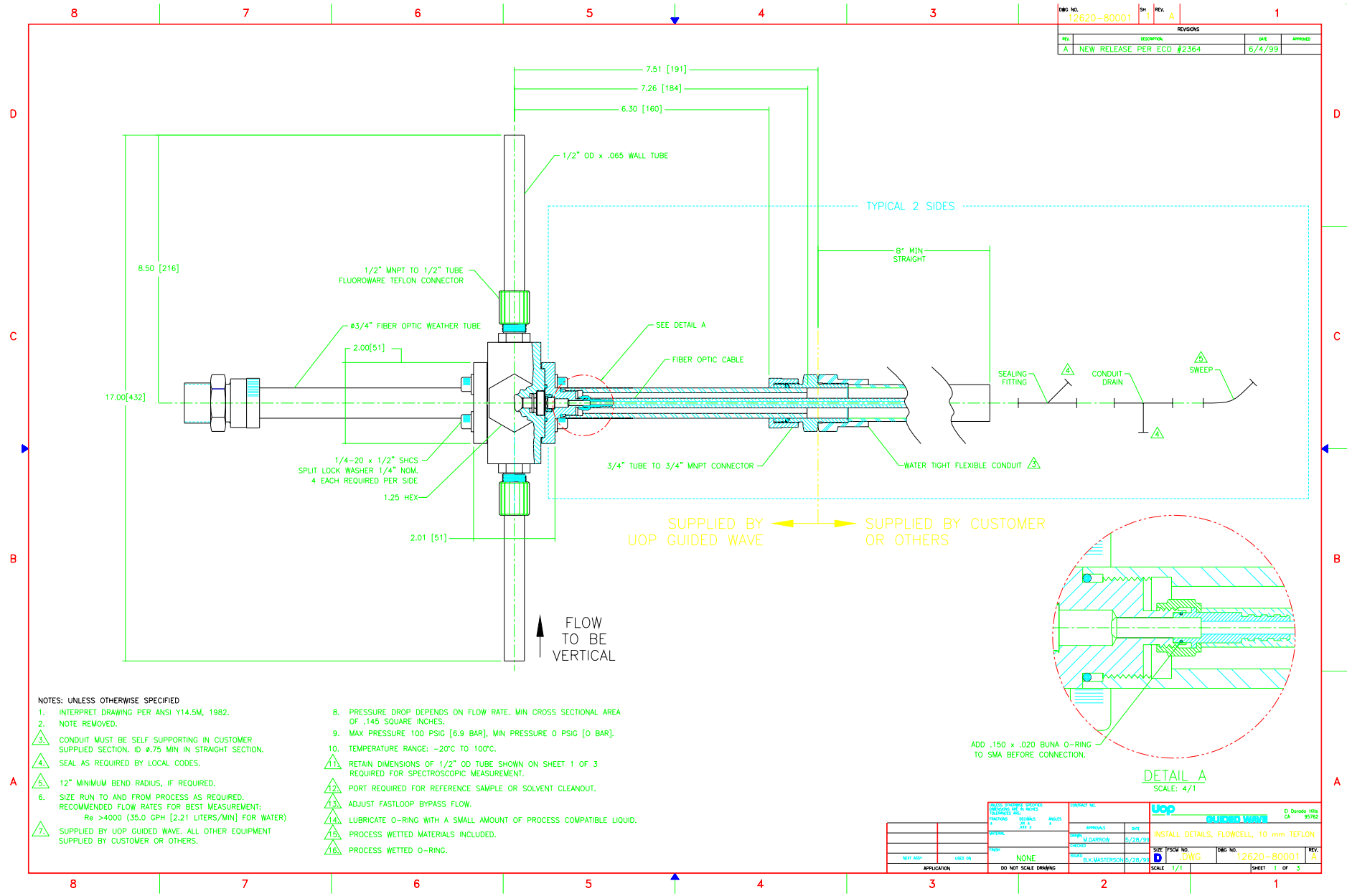
3033 Gold Canal Drive
Rancho Cordova, CA 95670
USA
Tel: 916.638.4944; Fax: 916.635.8458
gwinfo@guided-wave.com

www.guided-wave.com

Page 2 of 3

Guided Wave BV

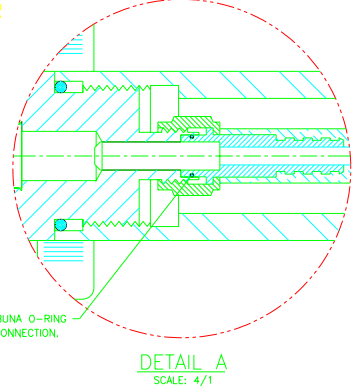
PO Box 427
7550 AK Hengelo (o)
The Netherlands
Tel: +31.74.2595390; Fax: +31.74.2595752
info@guided-wave-europe.com



DWG NO. 12620-80001		SH. REV. A	1
REVISIONS			
REV.	DESCRIPTION	DATE	APPROVED
A	NEW RELEASE PER ECO #2364	6/4/99	

- NOTES: UNLESS OTHERWISE SPECIFIED
- INTERPRET DRAWING PER ANSI Y14.5M, 1982.
 - NOTE REMOVED.
 - CONDUIT MUST BE SELF SUPPORTING IN CUSTOMER SUPPLIED SECTION. ID 4.75 MIN IN STRAIGHT SECTION.
 - SEAL AS REQUIRED BY LOCAL CODES.
 - 12" MINIMUM BEND RADIUS, IF REQUIRED.
 - SIZE RUN TO AND FROM PROCESS AS REQUIRED. RECOMMENDED FLOW RATES FOR BEST MEASUREMENT:
Re >4000 (35.0 GPH [2.21 LITERS/MIN] FOR WATER)
 - SUPPLIED BY UOP GUIDED WAVE. ALL OTHER EQUIPMENT SUPPLIED BY CUSTOMER OR OTHERS.

- PRESSURE DROP DEPENDS ON FLOW RATE. MIN CROSS SECTIONAL AREA OF .145 SQUARE INCHES.
- MAX PRESSURE 100 PSIG [6.9 BAR], MIN PRESSURE 0 PSIG [0 BAR].
- TEMPERATURE RANGE: -20°C TO 100°C.
- RETAIN DIMENSIONS OF 1/2" OD TUBE SHOWN ON SHEET 1 OF 3 REQUIRED FOR SPECTROSCOPIC MEASUREMENT.
- PORT REQUIRED FOR REFERENCE SAMPLE OR SOLVENT CLEANOUT.
- ADJUST FASTLOOP BYPASS FLOW.
- LUBRICATE O-RING WITH A SMALL AMOUNT OF PROCESS COMPATIBLE LIQUID. PROCESS WETTED MATERIALS INCLUDED.
- PROCESS WETTED O-RING.



CHECKED BY: [] DESIGNED BY: [] DRAWN BY: [] DATE: 5/28/99	APPROVALS: [] DATE: 5/28/99	UOP UNIVERSAL OPTICS PRODUCTS 10000 WILSON BLVD SAN DIEGO, CA 92121	INSTALL DETAILS, FLOWCELL, 10 mm TEFLON
TITLE: NONE UOP PART NO.: NONE UOP DRAWING NO.: B.M. MASTERSON 5/28/99	SIZE: 1/1 SCALE: 1/1	DWG NO.: 12620-80001 SHEET: 1 OF 3	REV. A

Guided Wave Incorporated
 3033 Gold Canal Drive
 Rancho Cordova, CA 95670
 USA
 Tel: 916.638.4944; Fax: 916.8458.4307
gwinfo@guided-wave.com

www.guided-wave.com

Guided Wave BV
 PO Box 427
 7550 AK Hengelo (o)
 The Netherlands
 Tel: +31.74.2595390; Fax: +31.74.2595752
info@guided-wave-europe.com