

Application Note - %Benzene in Gasoline

Benzene is a naturally occurring compound in crude oil and a very useful chemical solvent and feedstock. Unfortunately, it can be a significant health risk and is therefore environmentally regulated in many common products especially gasoline. Thus strict limits are put on the concentration and accurate measurements are required. The traditional analytical method for measuring benzene is gas chromatography (GC), which is time and labor intensive. This note will discuss the use of Guided Wave hardware and software tools for the measurement of %Benzene in fuel products using fiber optic-based, Near-Infrared (NIR) spectroscopy. NIR can be applied in real time directly in process monitoring or as a laboratory procedure. In either case NIR is a time and money saving alternative to traditional methods.

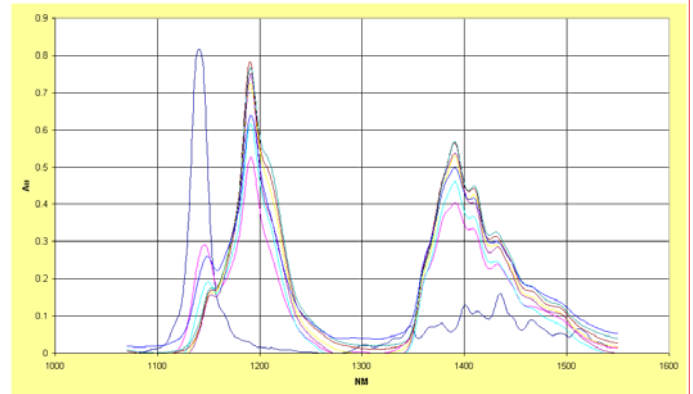
Measurement Background

The NIR region of the electromagnetic spectrum allows the use of the overtone and combination bands of the C-H, O-H, and N-H fundamentals. By measuring the NIR spectra of a series of fuel samples of known benzene concentration, a quantitative model can be developed which will allow the measurement of benzene in future samples based only on their NIR spectrum. Guided Wave analyzer systems use fiber optics to allow the sample probe to be located in remote locations away from the spectrophotometer itself.

Experimental

The NIR spectra of a group of 150 different process gasoline samples with known benzene concentration ranging from 0.2 to 6.0% were measured between 1000 and 1600 nm using a Guided Wave Model 310 NIR Spectrophotometer. Figure 1 shows the absorbance spectrum of pure benzene (in red) along with representative spectra of gasoline samples collected using an on-line process probe with a 1 cm pathlength. For this application, data preprocessing consisted of a simple 2-point baseline correction to remove any offset. The spectra and concentration data were submitted to the Unscramblertm software and a

Figure 1 - NIR Spectra of Pure Benzene and Gasoline Samples

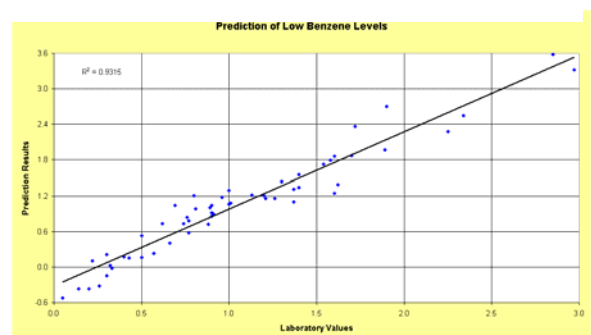


calibration model was developed using PLS regression methodology. For a discussion of PLS and other multivariate calibration techniques see Martens & Naes¹ and ASTM E1655².

Results

The model was used to predict benzene concentrations using an in-situ probe inserted in a process stream measuring in real time.

Figure 2 Prediction of Low Benzene Levels



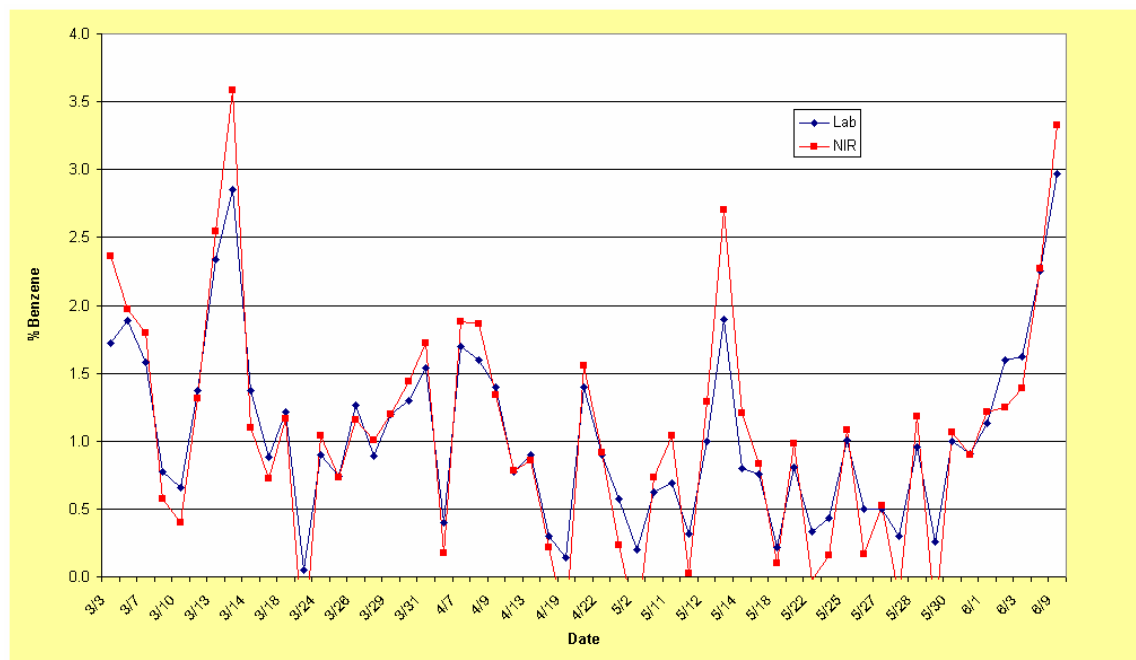
The results for this are shown in Figure 2 as a scatter plot and in

Figure 3 as a trend plot. The model produced a prediction RMSEP (root mean square error of prediction) of 0.30% benzene. This is in good agreement with the accuracy of the standard laboratory method.

Conclusion

The measurement of benzene in gasoline using NIR spectroscopy is both fast and reliable utilizing the Guided Wave hardware and software tools as described here. This method minimizes the need for laboratory sample collection. Results are available in real-time (seconds) for multiple parameters in complex streams. For more detailed information regarding system specifications please contact a Guided Wave sales or technical specialist.

Figure 3 Trend Plot Lab vs NIR %Benzene



References

1. H. Martens, T. Naes, Multivariate Calibration, John Wiley & Sons, 1989.
2. ASTM E1655 Standard Practices for Infrared, Multivariate, Quantitative Analysis.

Guided Wave Incorporated

3033 Gold Canal Drive
Rancho Cordova, CA 95670
USA
Tel: 916.638.4944; Fax: 916.635.8458
gwinfo@guided-wave.com

www.guided-wave.com

Guided Wave BV

PO Box 427
7550 AK Hengelo (o)
The Netherlands
Tel: +31.74.2595390; Fax: +31.74.2595752
info@guided-wave-europe.nl