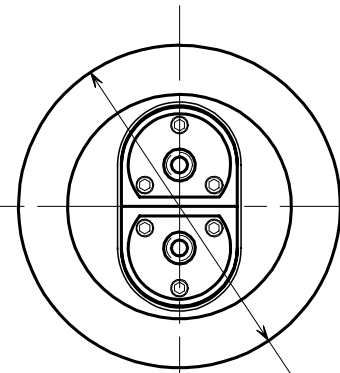
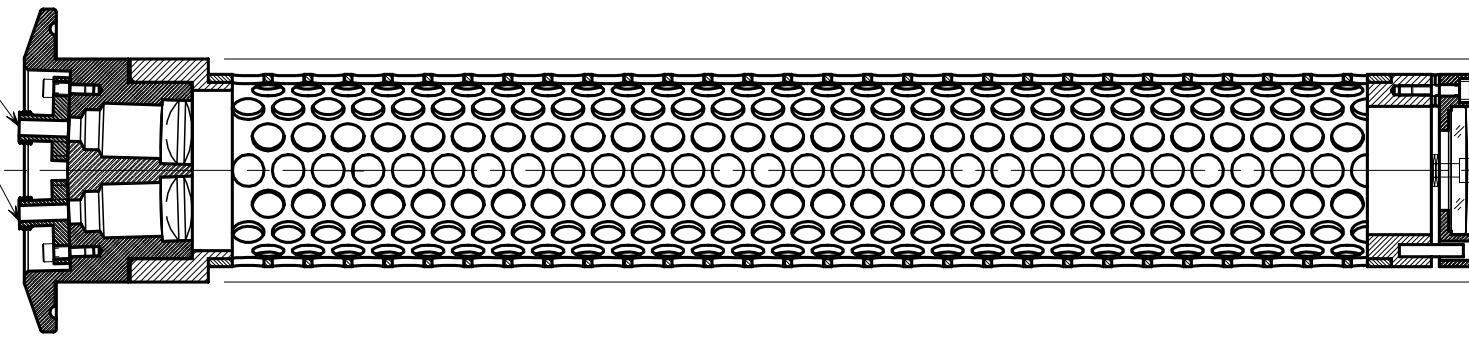


REVISIONS			
REV.	DESCRIPTION	DATE	APPROVED
A	Initial Release per ECO #2960	03/17/03	

Fiber Connection SMA 905

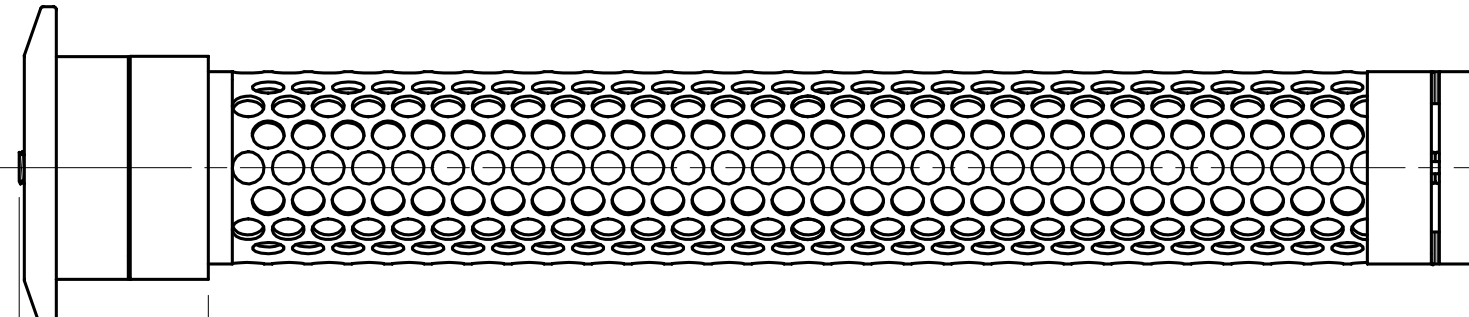


ø2.52" [6.39 cm]



1.50" [3.81 cm]

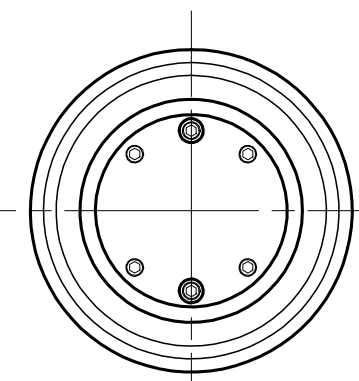
1.74" [4.42 cm]



1.19"

11.21" [28.5 cm]

11.50" [29.2 cm]



NOTES: UNLESS OTHERWISE SPECIFIED

1. Temperature Range: 0°C to 90°C
2. Pressure Range: 1e-5 Torr to 1520 Torr absolute
3. Pathlength: 50 cm; PATHLENGTH MUST BE SET TO 50 cm IN THE H2O2 VAPOR MONITOR
4. Flange: 2" [50.8 mm] Tri-Clover Tri-Clamp
5. Material: Electropolished 316 Stainless Steel

UNLESS OTHERWISE SPECIFIED DIMENSIONS ARE IN INCHES TOLERANCES ARE:			PROPRIETARY INFORMATION	
FRACTIONS	DECIMALS	ANGLES	The information contained herein is proprietary to GUIDED WAVE INC. It is not to be used, reproduced, or disclosed to any other party in any manner without prior written approval of GUIDED WAVE INC.	
± /	.XX ± .01	± 1	APPROVALS	DATE
	.XXX ± .005		T. R. Todd	02/26/2003
MATERIAL	DRAWN			
	CHECKED			
FINISH	ISSUED			
	T. R. Todd 02/26/2003			
NEXT ASSY	USED ON			
APPLICATION		DO NOT SCALE DRAWING		

GUIDED WAVE Inc.		El Dorado Hills CA 95762	
Installation, Probe, Gas, 50 cm SST TriClover			
SIZE	FSCM NO.	DWG NO.	REV.
C	19360-80050 Rev A...vcd	19360-80050	A
SCALE	1/1		SHEET 1 OF 1

DWG NO. 19360-80050
SH. REV. A