

CLASS-PA™ Process Analysis Software

CLASS-PA™ Software is a Windows® based software package for process monitoring and control utilizing Guided Wave® analyzers. Flexible and robust, **CLASS-PA** is ideal for continuous process monitoring applications. Running a single Guided Wave analyzer, the software can be accessed remotely without interrupting the continuous operations of the analyzer. Configuration options make it easy to allow multiple remote users to view data simultaneously.

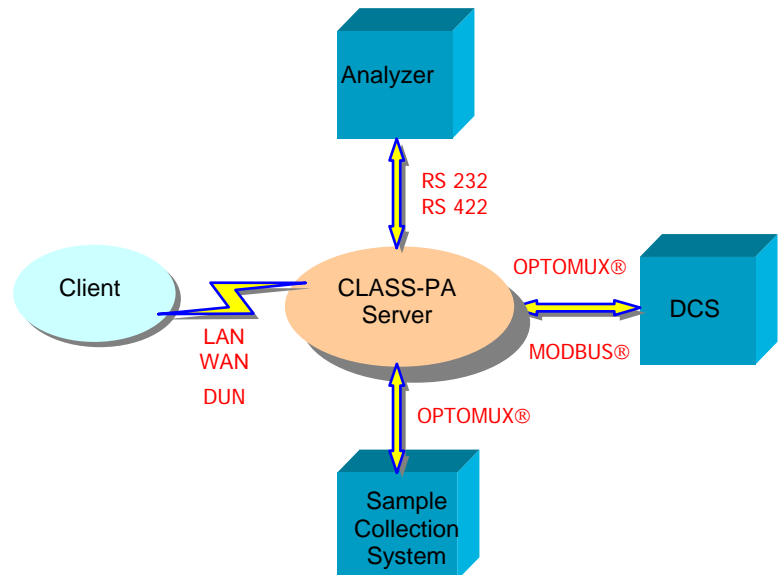
Specific Purpose

CLASS-PA (CLient And Server Software – Process Analytical) provides a Windows-based environment for continuous and batch process analysis. The software may be implemented in process applications of new or existing Guided Wave analyzers. This includes the ProSpec, InSite, Model 310, and the newest Guided Wave process analyzer, the Model 412.

A Comprehensive Package

CLASS-PA can be customized with “add-ons” to meet the needs of any process installation. At a minimum, the software is provided as a stand-alone package (“Server”) to control all aspects of your Guided Wave analyzer. The functionality of the software allows for full control of the analyzer, diagnostic systems, data manipulation, maintenance/event log, laboratory data entry, trend graphs, models, security, input/output, etc. Communications via OPTOMUX® and MODBUS® are included as standard.

Models developed in Camo’s Unscrambler® are supported directly. Pre- and post-processing of spectral data is done in a simple basic-like script



Language. **CLASS-PA** supports multiple probes each with multiple analyses. Models, probes, or the analyzer can be taken on and off line with the click of a button.

Remote Access

The “Client” option allows *remote access* to the **CLASS-PA** Server package over LAN/WAN or modem lines. With the proper security clearance, you can fully operate and configure the **CLASS-PA™** software and your Guided Wave analyzer from your desk in the plant or from home. With multiple licenses, you can have simultaneous Client packages viewing the operations, function and “health” of your on-line Guided Wave analyzer. This is extremely useful as the process engineer, laboratory technician, maintenance technician, and process supervisor can all access the analyzer remotely to accomplish their jobs. Furthermore, at your option Guided Wave’s Service Engineers and/or Applications Specialists can review and support your system, on demand, from our service centers.

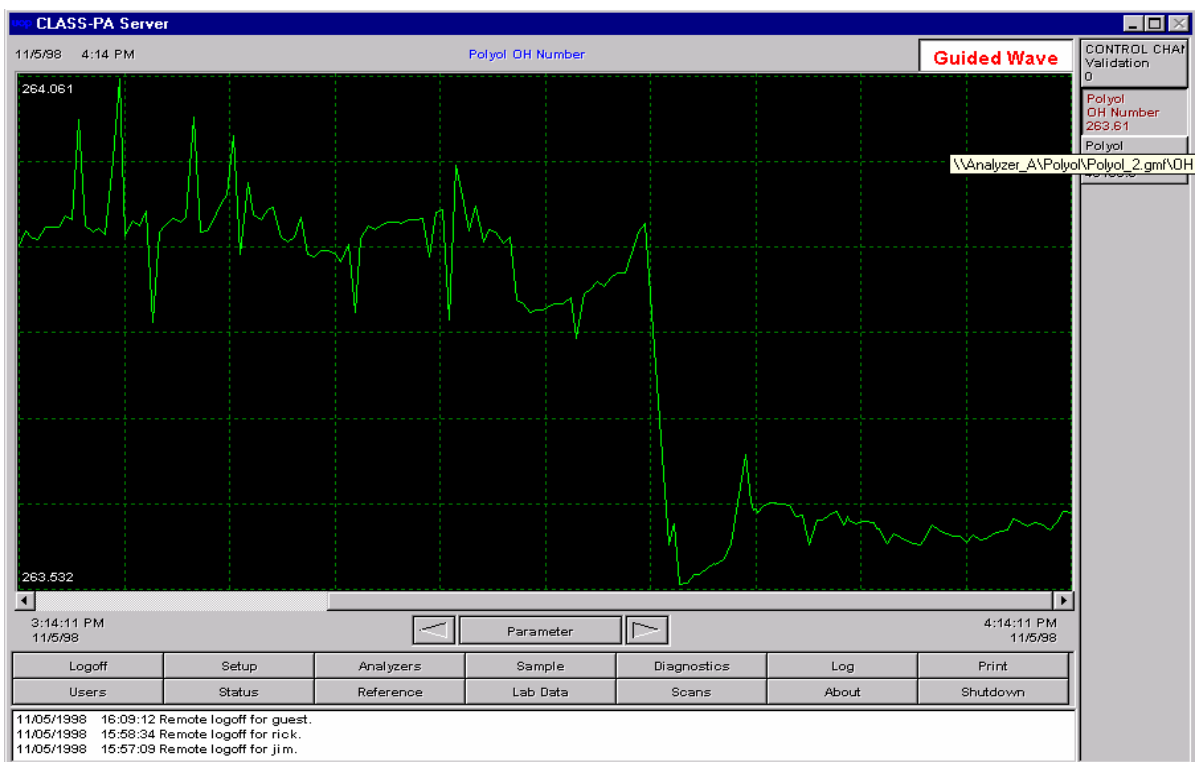
Functionality That Fits Your Needs

| Feature | CLASS-PA™ |
|--|-----------|
| Windows based | ✓ |
| Multi-tasking | ✓ |
| Pre-Configured for Easy Set-up | ✓ |
| Real-time Trend Charts | ✓ |
| Current Value Display | ✓ |
| Multi-level Password Protection | ✓ |
| Multiple Access Levels | ✓ |
| Built-in Diagnostics | ✓ |
| Network Accessibility, Local & Global | ✓ |
| Remote, Real-time Access | ✓ |
| Background Trial Models | ✓ |
| Component & System Level Event Logging | ✓ |
| Manual Entry Event Logs | ✓ |
| Built in Script Language | ✓ |
| The Unscrambler® Model Predictions | ✓ |
| Bi-directional MODBUS® Protocols | ✓ |
| OPTOMUX® Communication Protocol | ✓ |
| Laboratory Data Entry Module | ✓ |

Minimum Computer Requirements

- Pentium processor running at 1 GHz minimum
- Window XP®, Microsoft NT® 4.0 Operating System with Service Pack 6, or Windows 2000®™ Service Pack 2 (Server); Windows 98® or any of the above (Client)
- 128 MB RAM minimum
- 20 GB Hard Disk Drive minimum
- 17 inch SVGA monitor with 2 MB SVGA video controller
- CD-ROM Drive
- Floppy Drive, 3.5", 1.44 MB
- 100 MB Ethernet NIC if Client or access through Ethernet is anticipated
- 56K modem if Client or access through dial-up networking is anticipated
- Ports, as needed, for modem and MODBUS®
- Microsoft Remote Access Software (RAS) must be installed if modem access or dial-up networking is anticipated

Check out Guided Wave's full line of spectrophotometers and process probes at our web site, <http://www.guided-wave.com> or contact us at gwinfo@guided-wave.com



Specifications are subject to change without notice.

©2005 Guided Wave Inc.

Literature Number: 7001-05-09 RevC2

Guided Wave Incorporated
 3033 Gold Canal Drive
 Rancho Cordova, CA 95670
 USA
 Tel: 916.638.4944; Fax: 916.635.8458
gwinfo@guided-wave.com

www.guided-wave.com
www.guided-wave-europe.com

Guided Wave BV
 PO Box 427
 7550 AK Hengelo (o)
 The Netherlands
 Tel: +31.74.2595390; Fax: +31.74.2595752
info@guided-wave-europe.com